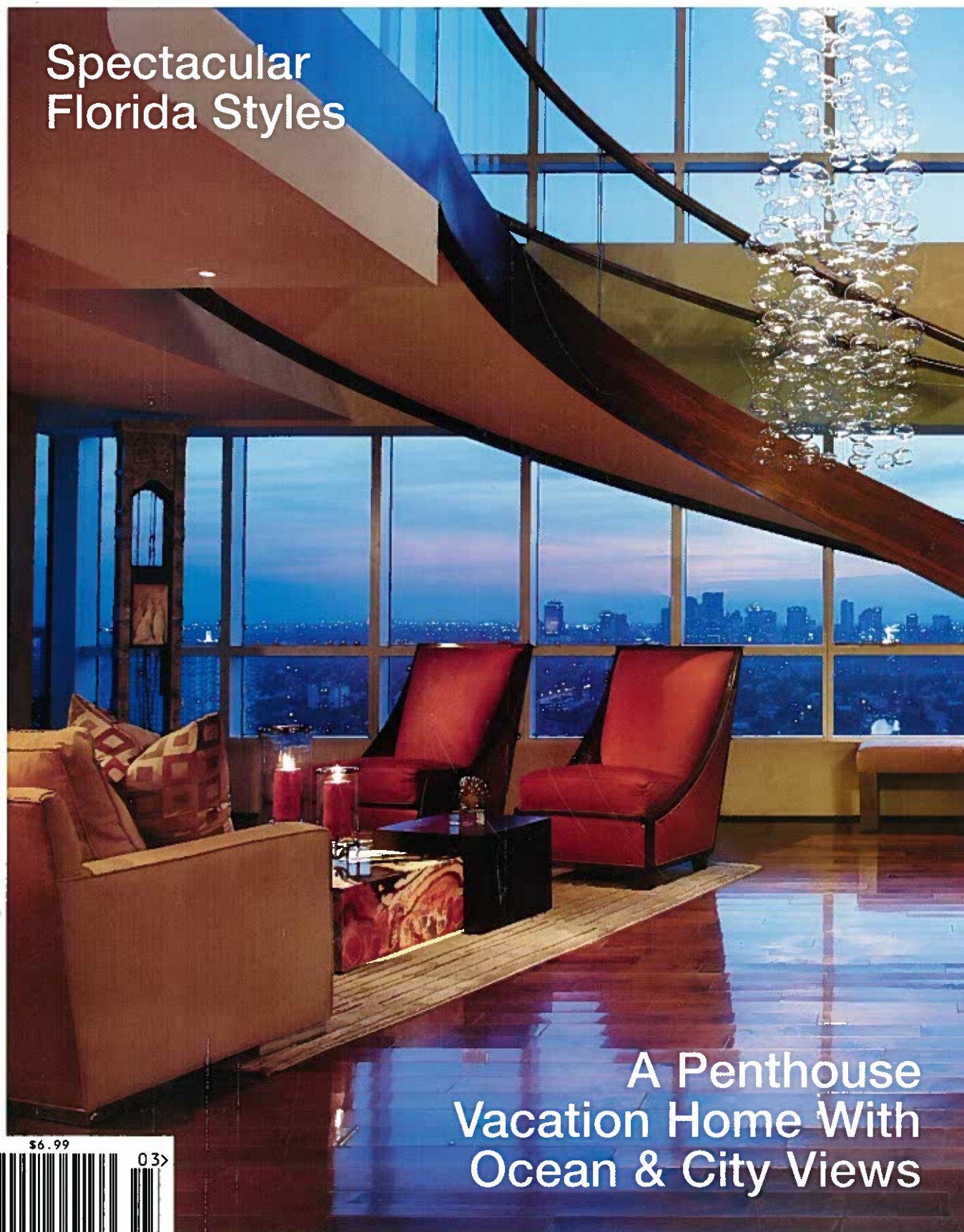


FLORIDA DESIGN

THE MAGAZINE FOR FINE INTERIOR DESIGN & FURNISHINGS

VOLUME 20#3

Spectacular
Florida Styles



A Penthouse
Vacation Home With
Ocean & City Views

\$6.99

03>



0 70992 36913 3



LIFE'S A BEACH

Ponte Vedra Homeowners Collaborate
With Stellar Design Talent In Creating
An Elegant Yet Stylish Oceanfront Home

An array of outdoor amenities, including a pool and two jacuzzis, graces the home's Mediterranean-style exterior. A custom-designed banquette covered in Perennials fabric encircles a fire pit, while furnishings from David Sutherland and a daybed from Pavilion Furniture offer additional seating.

INTERIOR DESIGN S. Marc Thee and Jeffrey S. Strasser, with Kathryn Dunagan, Mike Davison and Shannon Coyman, Marc Michaels Interior Design, Inc., Winter Park, FL
ARCHITECTURE Deryl Patterson, BSB Design, Jacksonville, FL
BUILDER Elwood Collier, Collier Classic Homes, Ponte Vedra Beach, FL
LANDSCAPE ARCHITECTURE Krent L. Wieland, Krent Wieland Design, Inc., Delray Beach, FL
TEXT De Schofield
PHOTOGRAPHY Kim Sargent, Palm Beach Gardens, FL

YEARS AGO, WHILE LIVING IN THE ESTEEMED GOLF COURSE enclave of Sawgrass Players Club, just outside of Jacksonville, Fla., homeowners Keith and Carol Watson purchased a small house on Ponte Vedra Beach as a vacation getaway where the couple and their two little boys enjoyed the luxury of owning their own, private oceanfront retreat. "We couldn't believe our luck in finding such a desirable piece of property here," Keith recalls. "It wasn't long before we began to imagine how great it would be to live here full-time instead of just on weekends and summer vacations."

"The Watsons were very hands on throughout the process yet afforded total creativity to our design team," interior designer Jeffrey S. Strasser says.



Nearly a decade later, that dream became a reality when the couple decided to tear down the existing beach house and rebuild their main residence on the same site, enlisting the talents of architect Deryl Patterson and builder Elwood Collier — both of whom recommended award-winning interior designers S. Marc Thee and Jeffrey S. Strasser to complete the interiors. "We hadn't worked with the designers before but were very familiar with their work," Carol says. "Their unique 'barefoot elegance' style was exactly what we desired."

The centerpiece of a nearly two-acre property, this spectacular, six-bedroom, 10,160-square-foot house provides an array of exterior amenities akin to a private country club, including a full-size tennis court, a golf green, and a rear exterior featuring an Olympic-sized lap pool, two Jacuzzis, a covered loggia and summer kitchen, a fire pit, and multiple outdoor seating areas, all with direct ocean views. "Both inside and out, the style is better characterized as Mediterranean-influenced

ABOVE: The living room's eclectic conversation grouping includes four traditional-style lounge chairs from Holly Hunt covered in a needlepoint tapestry from Brunshawig & Fils, a transitional club chair in Glant fabric and a carved Portuguese armchair from Charles Pollock Reproductions placed near a gilded cocktail table from Gregorius Pineo.

RIGHT: A custom-sized, alder-wood table grounds the dining room, where guest chairs are clad in cocoa-toned velvet and a host chair from Swaim is upholstered in floral-patterned damask from Brunshawig & Fils. A crystal Ironies' chandelier and quartz candleholders from Baker Knapp & Tubbs provide romantic lighting.



"My favorite aspect of this house is that it is utilized to the max,"

Strasser says. "It's luxurious and elegant yet casual and welcoming, and totally in sync with its owners' personalities."

with an updated, streamlined take on the family's aesthetic sensibilities and active lifestyle," Strasser says.

Inside, an eclectic mix of new and antique furnishings bestows a more relaxed edge with textural dimension throughout. The home's signature palette initiates in the living room, where sandy browns and sea spray water hues, in homage to the outdoors, pair with polished stone, warm-toned woods and silver leafed accents. Mexican Macedonia stone covers the custom-designed fireplace, flanked by two chests adorned with alabaster urn lamps, and continues in columns that lead to the elegantly formal dining room. Here, a copper-dusted ceiling defines the oval-shaped room from above, while, below, an "area rug" of sandy gold Spanish marble and polished Inca Gold limestone edged with glass tiles underscores the dining space.



ABOVE: Oversized, comfortable seating pairs with a cocktail table from Dennis & Leen in a rubbed silver leaf finish in the husband's library. Armchairs with braided-wood legs from Panache Designs, upholstered in Scalamandré's terra cotta-toned petite dot pattern, pull up to a writing desk from Donghia, topped by a Boyd Lighting table lamp.

"This house has a large, grand presence but really lives as a family home," Strasser says. "All of the spaces are meant to be lived in and enjoyed."



Down a hallway and through a set of custom-designed doors with glass insets lies the husband's library, where a contemporary-style desk finished in dark espresso oak makes a strong, masculine statement. Deep, neutral shades sparked with accents of gold and brick take their cues from the wall of golden-hued maple-wood cabinetry.

Keeping it casual, the nearby kitchen is the place "where everyone congregates," Carol says. Marble flooring lends continuity with the main living areas, while custom-designed, maple-wood cabinetry in a cream-toned finish and sea mist blue walls add a fresh, beachy theme. A relaxed ambiance continues into the family room, where two-story windows allow the outside view to take center stage and deep-seated furnishings provide comfortable seating. "This is a very uplifting space that embodies the light-hearted spirit of the Watson family," Strasser says.

ABOVE: In the kitchen, a glazed-ceramic tile backsplash pops against painted and glazed maple-wood cabinetry. Barstools from The Wicker Works with cushion fabric by Dedar pull up to an oversized island with a walnut-finished base that lends depth and presence. A hallway fronted by bookshelves leads to the butler's pantry.

RIGHT: Color imbues the family room with hues of tangerine and grapefruit found in accent pillows on a pair of wing chairs from Dennis & Leen and striped drapery fabric from Ammon Hickson with Houliés tiebacks. A bench covered in burnout velvet fronts a fireplace faced in chiseled stone with wood paneling.





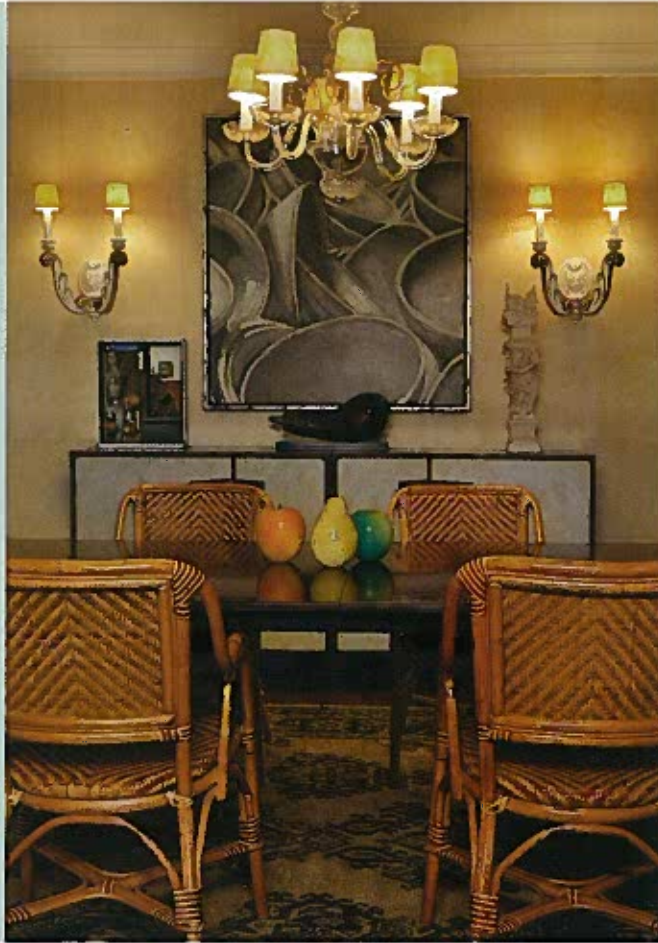
ABOVE: The master suite features a canopy bed from Michael Taylor flanked by chests from the Amy Howard Collection with a seaside blue painted finish. One seating area is composed of tufted-velvet, swivel club chairs and an ottoman, while the other includes a chaise from A. Rudin covered in Nancy Corzine's cream velvet from Nessen and a gold gilt armchair from Rose Tarlow Melrose House upholstered in tufted fabric from Pollack with raised flowerets.

Upstairs, the master suite is awash in tonalities of cream, apricot and sea spray blue to convey a serene, romantic theme. Lush fabrics and layered textures afford an elegant backdrop for the centerpiece, ebony-finished canopy bed appointed in custom silk coverings and cut-velvet pillows. "What we like best about this house is that while it is very spacious, we were still able to capture a feeling of warmth and coziness," Carol says. "We have ample space for the kids and their friends to gather here, but the house is equally as accommodating for us to host an elegant dinner party."

SCOTT ROBERTSON INTERIORS, INC.

1020 N. GOLFVIEW RD. • LAKE WORTH, FL 33460 • 561.301.0449

scottrobertson01@bellsouth.net



*Why Be
Ordinary?*™



Artistic Illusions

Renaissance Kitchen & Bath

Toilets • Lavatories • Clawfoot Tubs • Tiles

www.airkb.com • ai@airkb.com • 334.524.0590

SOURCES

Rear Exterior/Pool Area

Pool, fire pit, banquette, pedestals with plantered bowls and flooring - Custom designed by Krent Weiland Design, Delray Beach, FL

Pool, pool tiling and fire pit fabricated by John Clarkson, Jacksonville, FL

Banquette fabric - Perennials, David Sutherland Showroom, DCOTA, Dania Beach, FL

Fabricated by Personal Touch Draperies, Inc., West Palm Beach, FL

Pedestal columns fabricated by Cast Stone Industries, Inc., Altamonte Springs, FL

Planters fabricated by Creative Designs & Landscaping, Ponte Vedra Beach, FL

Decking fabricated by Kevin Partel, St. Augustine, FL

Daybed - Pavilion Furniture, Inc., Miami, FL

Fabric - Nomi Fabrics, Inc., Watsonville, CA, and Perennials, David Sutherland Showroom, DCOTA, Dania Beach, FL

Chaises, lounge chairs and ottomans - David Sutherland Showroom, DCOTA, Dania Beach, FL

Chaise fabric - Holly Hunt Miami, Miami, FL

Lounge chair and ottoman fabric - Nomi Fabrics, Inc., Watsonville, CA, and Editions, Houston, TX

Occasional table - Artifacts International, Chula Vista, CA

Living Room

Grid ceiling - Smith Custom Cabinetry, Inc., St. Petersburg, FL

Columns and fireplace

surround - Barbara Tattersfield Design, Inc., West Palm Beach, FL

Club chair - Cameron Collection, Dallas, TX

Beaded trim on blue accent

pillow - Kravet, Inc., Bethpage, NY

Portuguese armchair - Charles Pollock Reproductions, Inc., Los Angeles, CA

Cushion fabric - Gretchen Bellinger, Inc., Albany, NY

Ottoman - Kirk Brummel, Brunswick & Fils, Inc., North White Plains, NY

Cocktail table - Gregorius Pineo, Culver City, CA

Chests - Formations, Los Angeles, CA

Nesting occasional tables - Amy Howard Collection, Memphis, TN

Chandelier and candlestick table

lamp - Panache Designs, Los Angeles, CA

Double gourd table lamp - Baker Knapp & Tubbs, DCOTA, Dania Beach, FL

Alabaster urn lamps on chests - Gallery Elite, Carmel, CA

Candlesticks on cocktail table - The Steve Jensen Collection, Charles Pollock Reproductions, Inc., Los Angeles, CA

Jars - Dennis & Leen, Los Angeles, CA

Dining Room

Cove ceiling - Collier Classic Homes, Inc., Ponte Vedra Beach, FL

Side chair fabric and custom-sized host chair - Swaim Furniture, High Point, NC

Host chair fabric - Brunswick & Fils, North White Plains, NY

... continued